

7/8" 18 Mil (25 Gauge) Furring Channel with Hemmed Edge

Product Application:

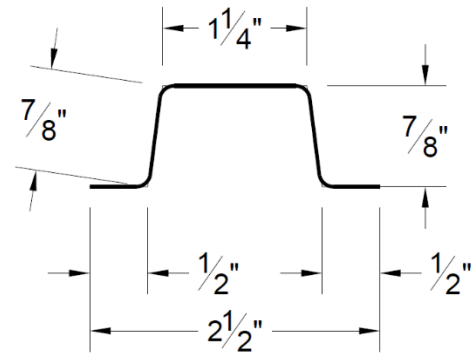
Super Stud Building Products Furring Channel (often called hat channel) provides support for sheathing, siding, and decking products in the construction of soffits, ceilings, roofs, and walls. Furring Channel is compatible for use over a number of different support members.

Hemmed leg furring channel (as shown) is only available in 18 mil (25 Gauge).

Furring Channels are 8, 9, 10, and 12 feet. Furring Channel is shipped in bundles of ten pieces.

Product Attributes:

- Super Stud Building Products Inc. manufactures nonstructural steel framing members, components, and accessories in compliance with American Iron & Steel Institute (AISI) and ASTM design A653, C645.
- Galvanized sheet steel meets requirements of ASTM A924 and A1003: G40 standard for 25 and 20 gauge; G60 available for 20 gauge. G60 standard for 18 and 16 gauge; G90 available for 18 and 16 gauge.
- Complete installation info is available in ASTM C754
- Hem on 18 MIL (25 Gauge) Material



Note: all dimensions are plus or minus 1/8 inch

Section Properties: 18 Mil (25 Ga) Furring Channel

									Effective Properties			
Gauge	Design thickness (in)	Fy (ksi)	Depth (in)	A (in ²)	Ix (in ⁴)	rx (in)	Iy (in ⁴)	ry (in)	Ixd (in ⁴)	Sxe (in ³)	Ma (in-kips)	Va (kips)
25	0.0188	33	0.875	0.079	0.010	0.358	0.044	0.745	0.010	0.019	0.374	0.248



Steel Framing Alliance™



American Iron and Steel Institute

